

SnifferPipe

Aspirating Pipe & Fittings



SnifferPipe is a comprehensive range of high quality pipe, fittings and accessories for aspirating smoke detection systems such as the HART XL and HART Mini High Sensitivity Smoke Detection (HSSD)TM systems.

Air Sampling

SnifferPipe draws air from the protected area through sampling holes using an aspirating fan housed in the detection unit. The pipework is arranged in various configurations according to the application. Typically a pipe network system will comprise a network of pipe complete with sampling points, which are spaced at intervals similar to that of point detection. Pipe network systems can also be arranged to monitor across Air Handling Units (AHU) or in ducts.

The pipework can be concealed behind suspended ceilings in order not to detract from the aesthetics of the environment it is protecting.

Three sampling techniques can be used:

- Standard pipe sampling systems (below ceiling; in ceiling or floor void)
- Capillary tube sampling (concealed; above ceiling or within cabinets)
- Return air sampling (within duct; AHU; return air grille)

Capillary tube sampling is a means of locating sampling points away from the main sampling pipe without creating complex networks. This is useful when the trunk pipe is not on the same horizontal or vertical plane as the desired sampling point. Typically, this method uses up to 1 m lengths of 10 mm (OD) flexible tubing that branches off from the trunk pipe and then penetrates a given surface. The associated flush-mounted and mini sampling points are designed to be as unobtrusive as possible.



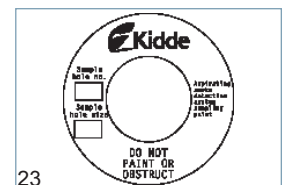
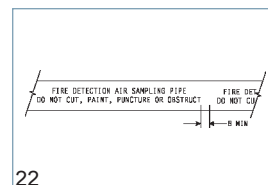
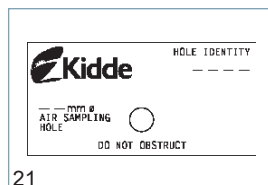


Pic No	Description	Part Number
1	Air Sampling Pipe 25 mm 3m length	21888 - K016
	32 mm 3m length	21888 - K026
2	Straight Socket 25mm	21888 - K020
3	90° Elbow 25mm	21888 - K017
4	45° Elbow 25mm	21888 - K018
5	Equal Tee Piece 25mm	21888 - K019
6	End Cap 25mm	21888 - K021
7	Union Socket 25mm	21888 - K024
8	Pipe Clip 25mm	21888 - K025
9	3/4" BSP Imperial to 25mm Metric Adaptor*	21888 - K022
10	1" BSP Imperial to 25/32mm Metric Adaptor*	21888 - K023
11	Elutriator c/w 25mm Socket Unions	53836 - K208
12	Mini Sampling Point Assembly c/w End Cap Adaptor**	21888 - K034
	Mini Sampling Point Assembly c/w Remote Sample Point Adaptor**	21888 - K047
13	Flush Sampling Point Assembly c/w End Cap Adaptor**	21888 - K035
	Flush Sampling Point Assembly c/w Remote Sample Point Adaptor**	21888 - K046
14	Capillary Tube (10mm OD; 8mm ID) 50 metre reel	21888 - K031
15	SnifferPipe Solvent Cement (250 ml)	21888 - K029
	SnifferPipe Cleaner (250 ml)	21888 - K059
16	Pipe Cutters	21888 - K028
17	Wire Burn Test Box and Test Wire	21888 - K032 21888 - K033
18	13g Smoke Pellets (6 per tube)	21888 - K030
19	Remote Sample Point Adaptor	21888 - K036
20	End Cap Adaptor	21888 - K037
21	Pipe Sampling Point Label	36215 - K326
22	Pipe Warning Label	39155 - H11
23	Mini Sampling Point Label	36215 - K235
	Tee - 32mm	21888 - K048***
	Straight Socket - 32mm	21888 - K049***
	Pipe Clip - 32mm	21888 - K050***
	Reducer 32/25mm	21888 - K051***
	Union Socket - 32mm	21888 - K052***
	90 Degree Elbow - 32mm	21888 - K053***
	90 Degree Long Radius Bend - 32mm	21888 - K054***
	45 Degree Elbow - 32mm	21888 - K057***

* Supplied as standard with HART XL Detection Unit

** Includes 1 metre capillary tube

*** 32mm ABS fittings available in grey only



Pipe & Fittings

The sampling pipe and fittings are manufactured from red Acrylonitrile Butadiene Styrene (ABS) under a stringent quality control approved to BS 5391 Part 1:1976 and BS EN ISO 9001:2000.

The outstanding physical properties of ABS make the pipe and fittings ideal for aspirating pipework systems:

- Efficient and robust
- Smooth bore to facilitate air flow to the detector
- Lightweight and easy to install
- High resistance to chemicals and weathering
- Suitable for use over wide temperature range of -40 to $+80^{\circ}\text{C}$

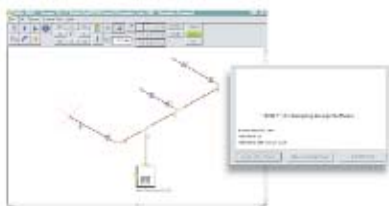
The red colour and clear markings printed along its length on opposite sides at 200mm intervals ensure the air sampling network is easily identifiable from other services. All sampling points are supplied with an identification label to prevent damage during decorating or other routine maintenance work.

The SnifferPipe range is based on pipework of a metric standard outside diameter (OD) of 25 mm and inside diameter (ID) of 21 mm. The 25mm pipe, fittings and accessories listed in the table opposite are available from stock. The 32 mm pipe and accessories are available on request.

Design, Installation & Commissioning

Aspirating smoke detectors will only work effectively when the pipe system has been designed, installed, and commissioned correctly.

SNIFF is easy to use pipe design and airflow calculation software from Kidde Fire Protection. It is Windows™ compatible and features isometric system design drawings from different angles, easy operation and clear displays.



All pipes should be airtight and permanently fixed using SnifferPipe ABS solvent cement. Solvent cement offers a simple and quick means of constructing high-integrity, leak-free joints.

Joint integrity is greatly reduced if surfaces are not properly prepared and absolutely clean.

The transport time of the air flow to the detector should be minimised to ensure the earliest possible detection of any pre-combustion particles in the air sample. To achieve this the SNIFF programme can calculate multiple pipe branches allowing the minimum amount of pipe to be used to cover an area.

To minimise flexing of the pipework (leading to possible damage to the network) it should be secured every 1.5 metres (5ft) or less.

Sampling holes appropriately sized to achieve the performance as specified and calculated by the system design, shall not be at more than 10 metre intervals for installations complying to BS5839 Part 1, along the length of the pipe.

Consideration should be given to manufacturers' recommendations and standards in relation to the number of sampling points and the distance of the sampling points from the ceiling or roof structure and forced ventilation systems.

The installer must be certified by Kidde Fire Protection or one of its distributors and should be familiar with the design considerations and the relevant standards, codes and regulatory requirements.

Note:

SnifferPipe will increase in length by 0.1% for every 10°C rise in temperature and decrease in length by the same amount for every 10°C drop in temperature.

It is important that this expansion / contraction is taken into account when installing SnifferPipe. Where pipe is to be installed in areas where the temperature can fluctuate, an expansion / contraction offset or flexible coupler should be installed every 10 to 20m along the pipe. Also, pipe supports / clips should allow for movement of pipe through them.

Typical Applications

SnifferPipe network systems provide total protection in mission critical facilities:

When downtime must be minimised with high cost equipment:

- Clean rooms
- Computer rooms
- Telecommunications
- Broadcast facilities
- Server Farms and Telco Hotels

Where smoke is difficult to detect in areas with high ceilings or high air flow

- Atria
- Warehouses
- Cold storage
- Indoor stadiums

In extreme environments that pose a problem to conventional smoke detection:

- Power stations
- Mines
- Offshore

Where appearances are important and preservation of priceless objects is a priority:

- Modern offices
- Heritage buildings
- Cathedrals
- Museums
- Libraries

When extra time is necessary to affect safe and orderly evacuation:

- Airports
- Underground railway systems
- Hospitals
- Theatres
- Cinemas



Order Form

For prices refer to the latest price list
 FOR FAST-TRACK ORDERING (UK ONLY) - FAX TO 01844 265156

Name	Order No
Company	Customer Ref
Shipping Address	Invoice Address
Tel	Tel
Fax	Fax
e-mail	

PRODUCT	PART NO.	PRICE (£)	QUANTITY	TOTAL
Air Sampling Pipe 25mm 3m length	21888-K016			
Air Sampling Pipe 32mm 3m length	21888-K026			
Straight Socket 25mm	21888-K020			
90° Elbow 25mm	21888-K017			
45° Elbow 25mm	21888-K018			
Equal Tee Piece 25mm	21888-K019			
End Cap 25mm	21888-K021			
Union Socket 25mm	21888-K024			
Pipe Clip 25mm	21888-K025			
3/4" BSP Imperial to 25mm Metric Adaptor*	21888-K022			
1" BSP Imperial to 25/32mm Metric Adaptor*	21888-K023			
Elutriator c/w 25mm Socket Unions	53836-K208			
Mini Sample Point Assembly c/w End Cap Adaptor** (Excludes Sample Point Label 36215-K235)	21888-K034			
Mini Sample Point Assembly c/w Remote Sample Point Adaptor** (Excludes Sample Point Label 36215-K235)	21888-K047			
Flush Sampling Point Assembly c/w End Cap Adaptor**	21888-K035			
Flush Sampling Point Assembly c/w Remote Sample Point Adaptor**	21888-K046			
Capillary Tube (10mm OD, 8mm ID) 50 Metre reel	21888-K031			
Mini Sample Point	21888-K044			
Flush Sample Point	21888-K045			
SnifferPipe Solvent Cement (250ml) Tin c/w brush	21888-K029			
SnifferPipe Cleaner (250ml)	21888-K059			
Pipe Cutters	21888-K028			
Wire Burn Test Box	21888-K032			
Test Wire	21888-K033			
13g Smoke Pellets (6 per tube)	21888-K030			
Remote Sample Point Adaptor	21888-K036			
End Cap Adaptor	21888-K037			
Pipe Sampling Point Label	36215-K326			
Pipe Warning Label (100 labels per roll)	39155-H11			
Mini Sampling Point Label	36215-K235			
Tee - 32mm	21888-K048***			
Straight Socket - 32mm	21888-K049***			
Pipe Clip - 32mm	21888-K050***			
Reducer 32/25mm	21888-K051***			
Union Socket - 32mm	21888-K052***			
90 Degree Elbow - 32mm	21888-K053***			
90 Degree Long Radius Bend - 32mm	21888-K054***			
45 Degree Elbow - 32mm	21888-K057***			
			SUB TOTAL	
			LESS AGREED DISCOUNT	
			V.A.T.	
			TOTAL	

* Supplied as standard with HART XL Detection Unit
 ** Includes 1 metre capillary tube
 *** 32mm ABS fitting available in grey only

Kidde Fire Protection operates a continuous programme of product development. The right is therefore reserved to modify any specifications without prior notice and Kidde Fire Protection should be contacted to ensure that the current issue of all technical data sheets are used.

Kidde Fire Protection

Thame Park Road, Thame, Oxfordshire OX9 3RT, UK.

Tel: +44 (0)1844 265003 Fax: +44 (0)1844 265156 E-mail: info@kfp.co.uk Web: www.kfp.co.uk